

INVASIVE ALIEN VEGETATION CLEARING COORDINATION FRAMEWORK



Content

1. Purpose	1
2. Objectives	2
3. Standard Operating Procedures	5
a) Consultations and Working Groups	5
b) Procurement of Services	6
c) Reporting on work completed or sites cleared	6
d) Annual update of map	7
4. Alien Clearing Priorities: Cape Winelands District Municipal Area	

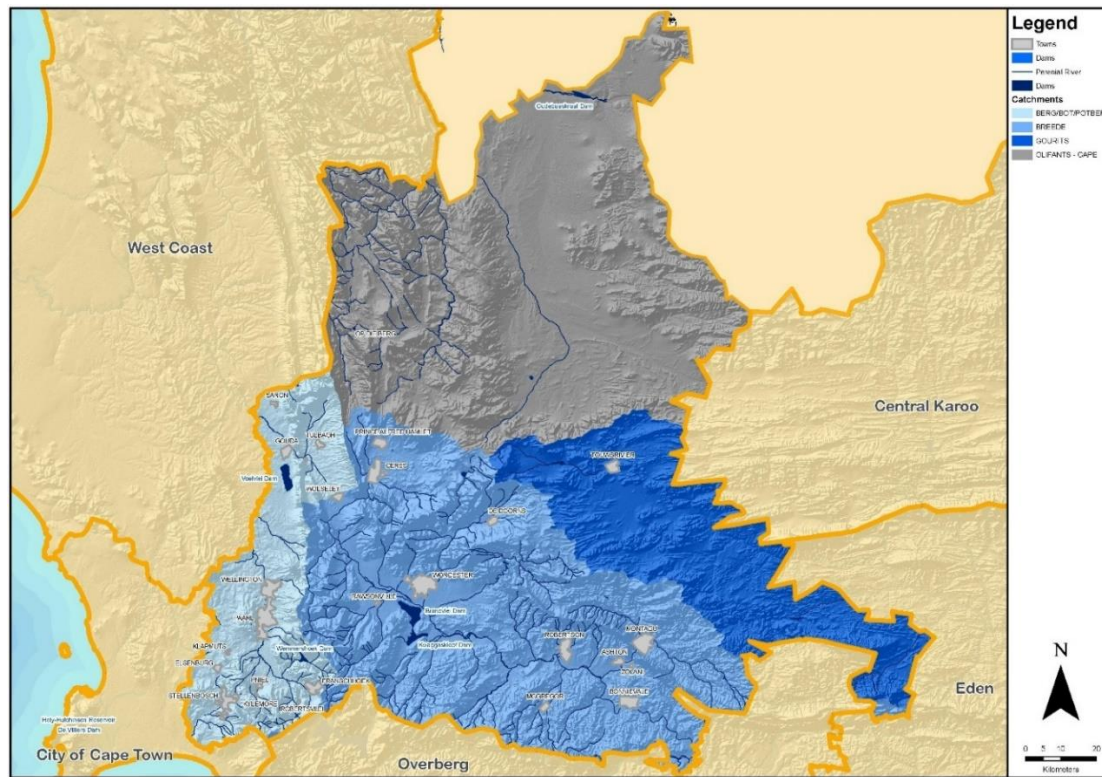
List of Maps:

Map 1: CWDM Hydrology	1
Map 2: Vegetation types in the CWDM	3
Map 3: Biological Sensitivity of Fauna	4
Map 4: Combined priorities	7
Map 5: Breede Valley Municipal area priorities	8
Map 6: Drakenstein Municipal area priorities	9
Map 7: Langeberg Municipal area priorities	10
Map 8: Stellenbosch Municipal area priorities	11
Map 9: Witzenberg Municipal area priorities	12
Map 10: High priority fire risk areas near urban settlements, Drakenstein Municipality	13
Map 11: High priority fire risk areas near urban settlements, Stellenbosch Municipality	14

1. Purpose

The purpose of alien clearing coordination is to understand and present alien clearing activities that are planned for and implemented by various role players in the geographic area of the Cape Winelands District Municipality. This will assist the CWDM and partners with site selection, planning and budgeting and prevent partners planning and budgeting for the same areas/sites.

The CWDM consist of four catchments, the Berg, Breede, Gouritz and Olifants river catchments. The Breede and Berg river catchments provide water to the bulk of the CWDM settlements as indicated on map 1 below with the exception of Touwsriver that falls within the Gouritz river catchment and Op die Berg within the Olifants-Cape.



The Berg and Breede river catchments are the main priority, all clearing activities are planned for these catchments.

2. Objectives

The CWDM does alien clearing in partnership with category B municipalities. This initiative is referred to as the district municipality's natural resource management support programme.

The main objectives of the natural resource management support programme are:

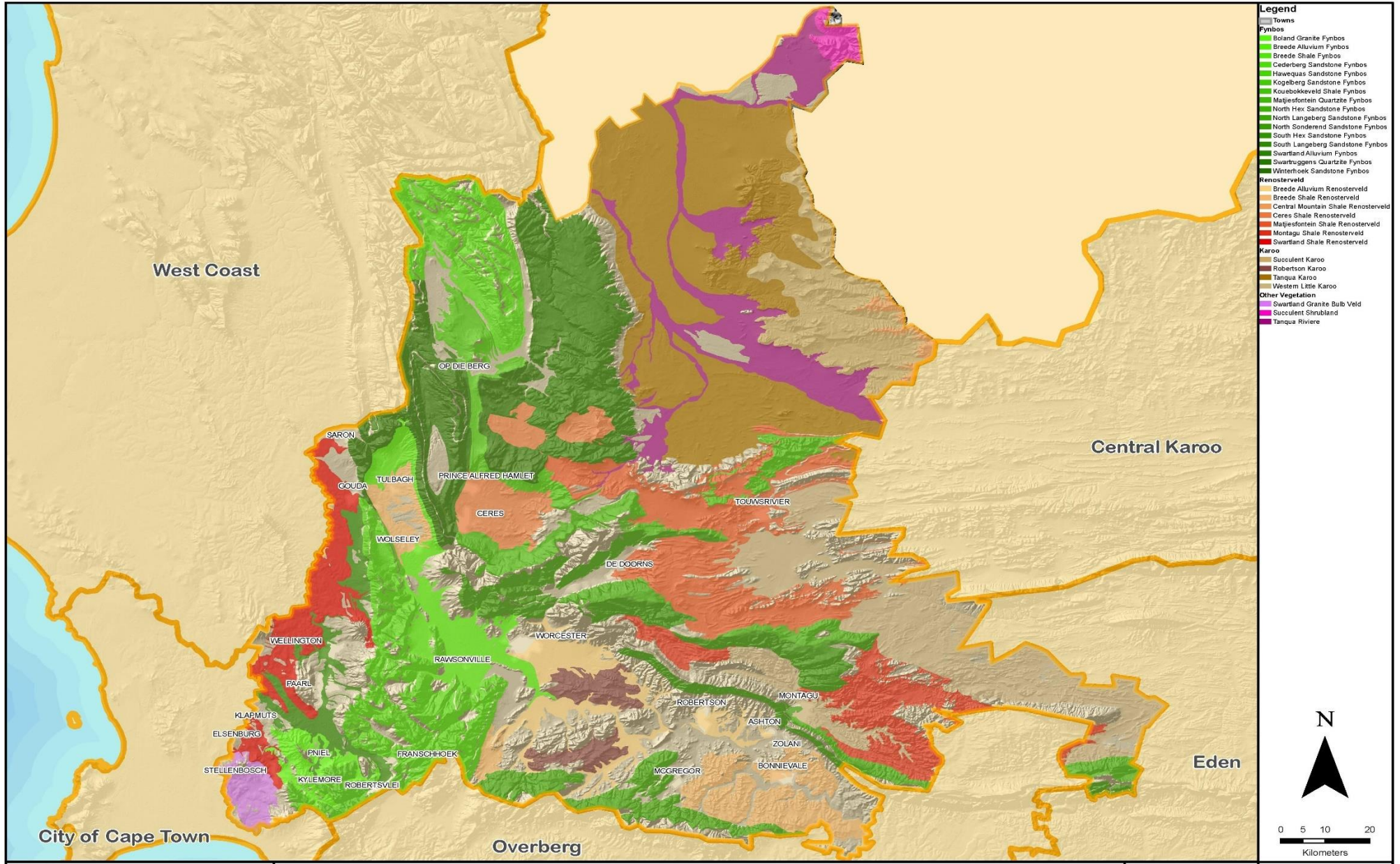
- a). Biodiversity conservation in partnership with category B municipalities.
- b). Catchment management specifically in local municipal water supply catchments in partnership with category B municipalities.
- c). Contributing to clearing invasive alien plant species in the broader water catchments of the CWDM to ensure greater water runoff into rivers.
- d). To create work opportunities as part of the Environmental Sector Expanded Public Works Programme (EPWP).
- e). Supporting municipalities with clearing fire risk areas from invasive alien plant species as per the wildland urban interface maps from WCPG.

The CWDM 's partners are the five (5) category B municipalities in the district, Breede Valley, Drakenstein, Langeberg, Stellenbosch and Witzenberg Municipalities, Cape Nature, the catchment management agencies Breede Overberg Catchment Management Agency and Wolseley Water Users Association, Department of Environment, Water and Fisheries's Working for Water Division and the Department of Agriculture's Landcare Division.

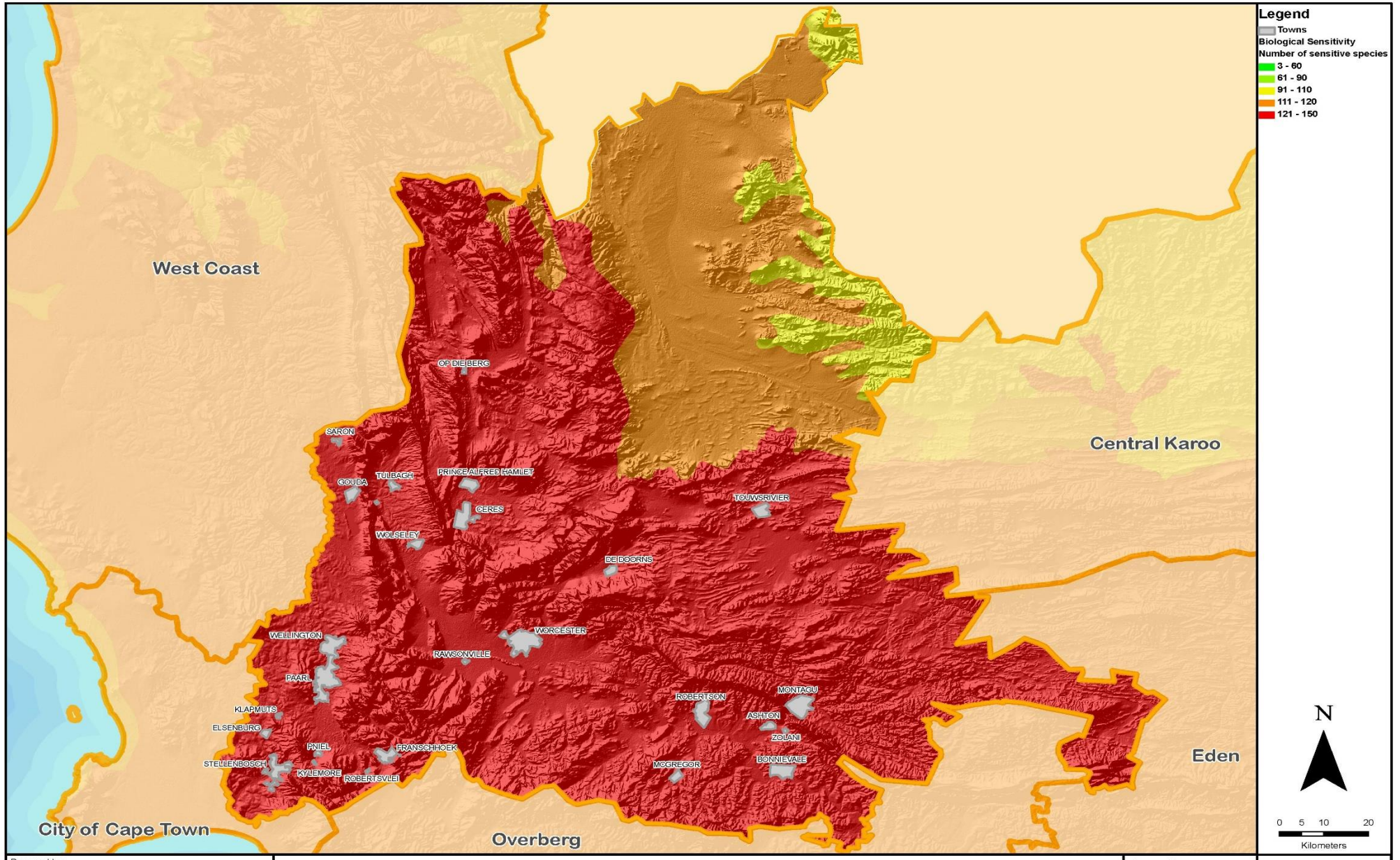
The CWDM does clearing on state owned land, in certain instances, where a catchment overlaps with a priority portion of private land that provides substantial water runoff into the water source, an exception will be made.

Map 2/follows

Map 2: Vegetation types in the CWDM.



Map 3: Biological Sensitivity of Fauna.



3. Standard Operating Procedure:

This procedure is followed annually, linked to the financial year of local government which runs from 1 July to 30 June.

a). Consultations and Working Groups:

Consultations are done annually with the category B municipalities. Separate consultations are scheduled due to the different priorities and geographic areas that are discussed.

A joint session is scheduled between Department of Environment, Water and Fisheries Working for Water division and the Breede Overberg Catchment Management Agency and Wolseley Water Users Association or other implementing agents that are funded through the Working for Water programme.

The draft map is circulated to Cape Nature for updates, depending on overlapping priority areas identified by category B municipalities, meetings are scheduled with Cape Nature to discuss these matters.

Further platforms includes:

- Upper Breede Collaborative Extension Group Alien Clearing Working Group
- Proposed Berg River Working Group

The purpose of the consultation process is to:

- Update priority areas that will be cleared by the relevant partner within 1 to 3 years.
- Identify new priority areas that will be cleared by the CWDM through the CWDM's natural resource management support programme.

b). Procurement of services:

The CWDM is responsible for procuring services of contractors through the district municipalities Supply Chain Management division who is responsible for the procurement process.

A Tender process is used. A single Tender is advertised per category B municipal area. Tenders are subject to the provisions of the Municipal Financial Management Act 2004. The priority sites advertised per Tender is agreed upon by the relevant partner.

c). Reporting on work completed or sites cleared:

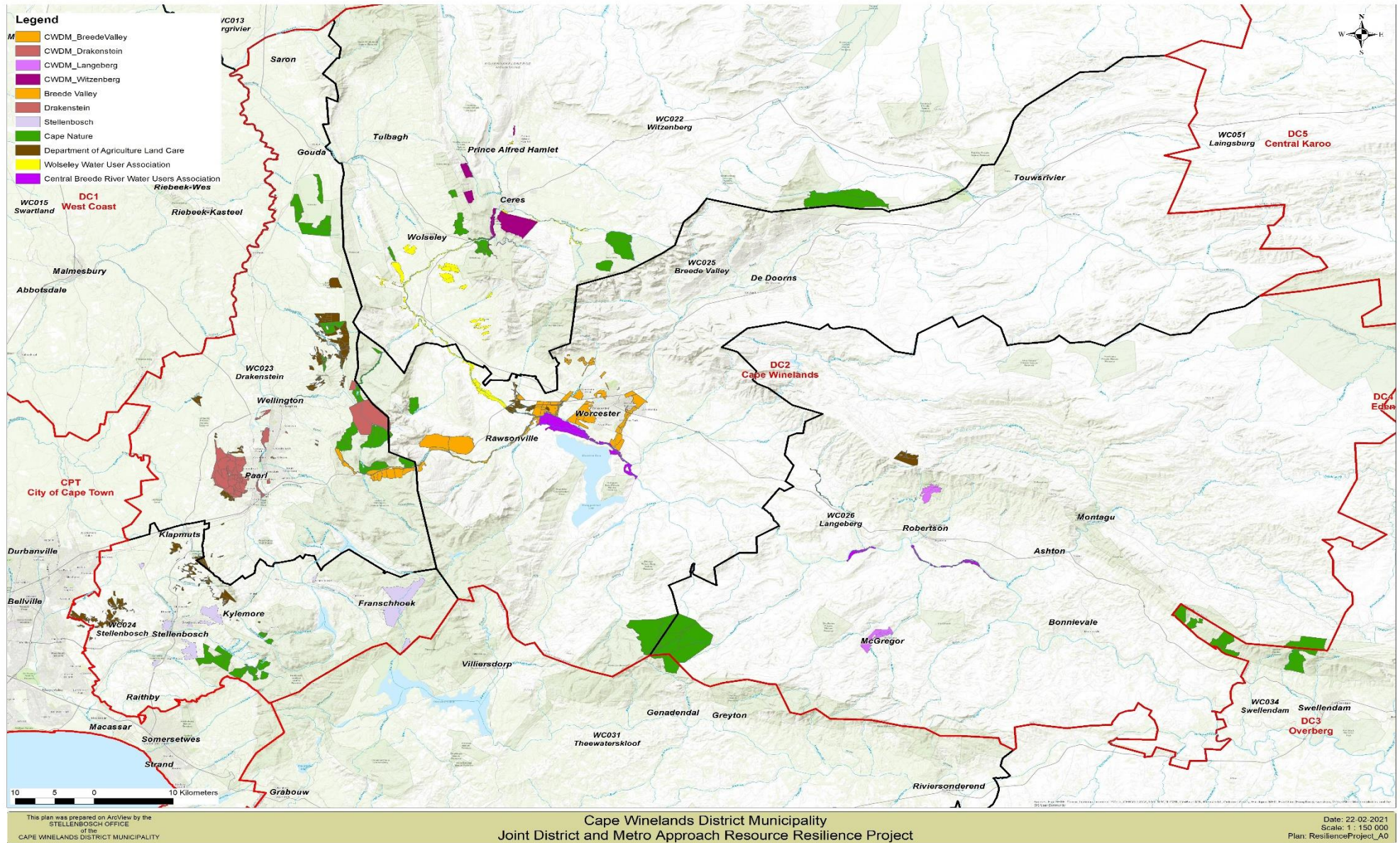
- CWDM's internal performance management system
- DEA EPWP IT based website. The CWDM must report on work opportunities created. DEA National gives EPWP funding to the CWDM.
- Collaborative platforms; Upper Breede Collaborative Extension Group (UBCEG) and the Drakenstein Reference Group.

d). Annual update of alien clearing coordination map:

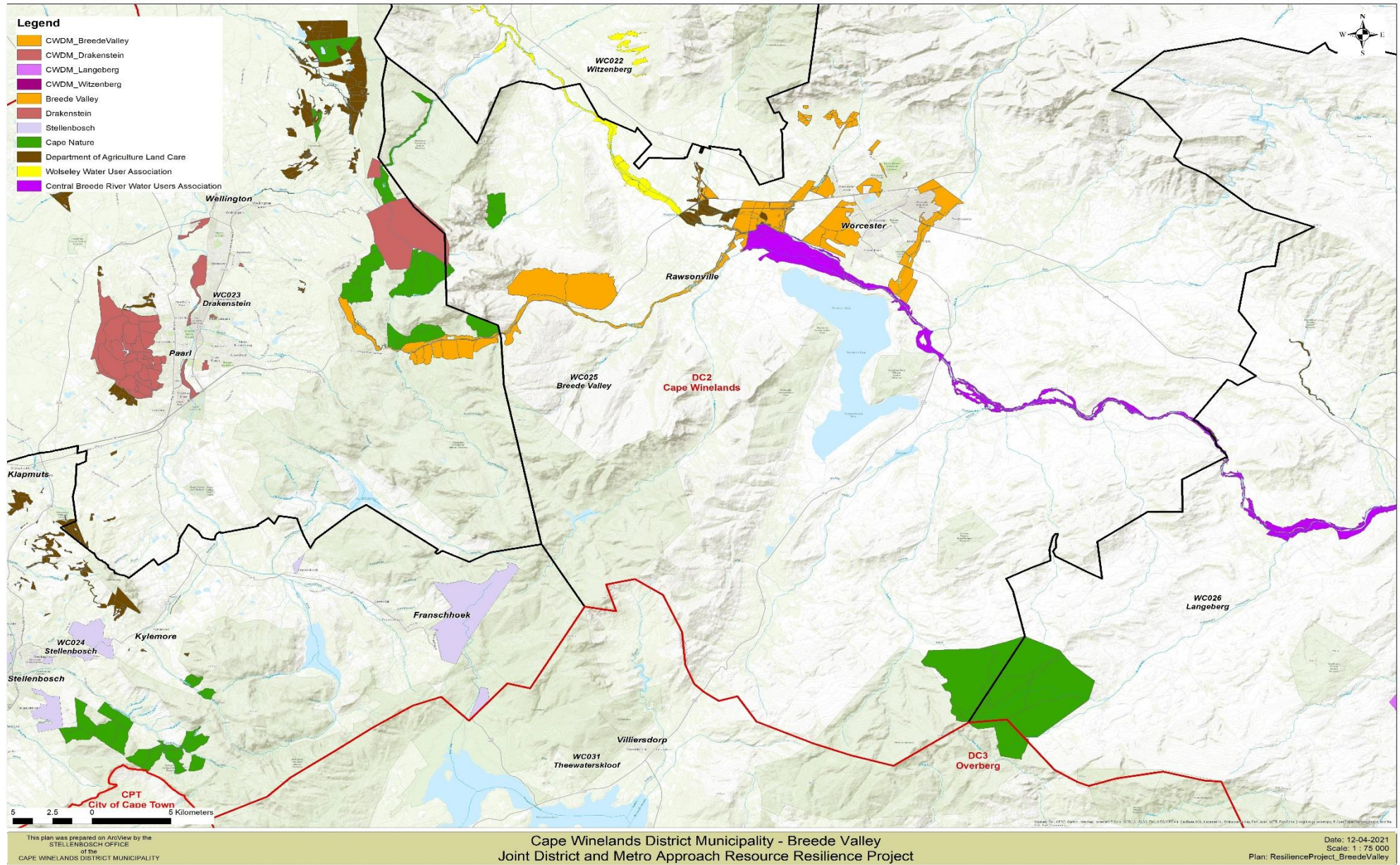
The mentioned map is updated annually by the CWDM after successful consultations with the relevant partners.

4. Alien clearing priorities: Cape Winelands District Municipal area

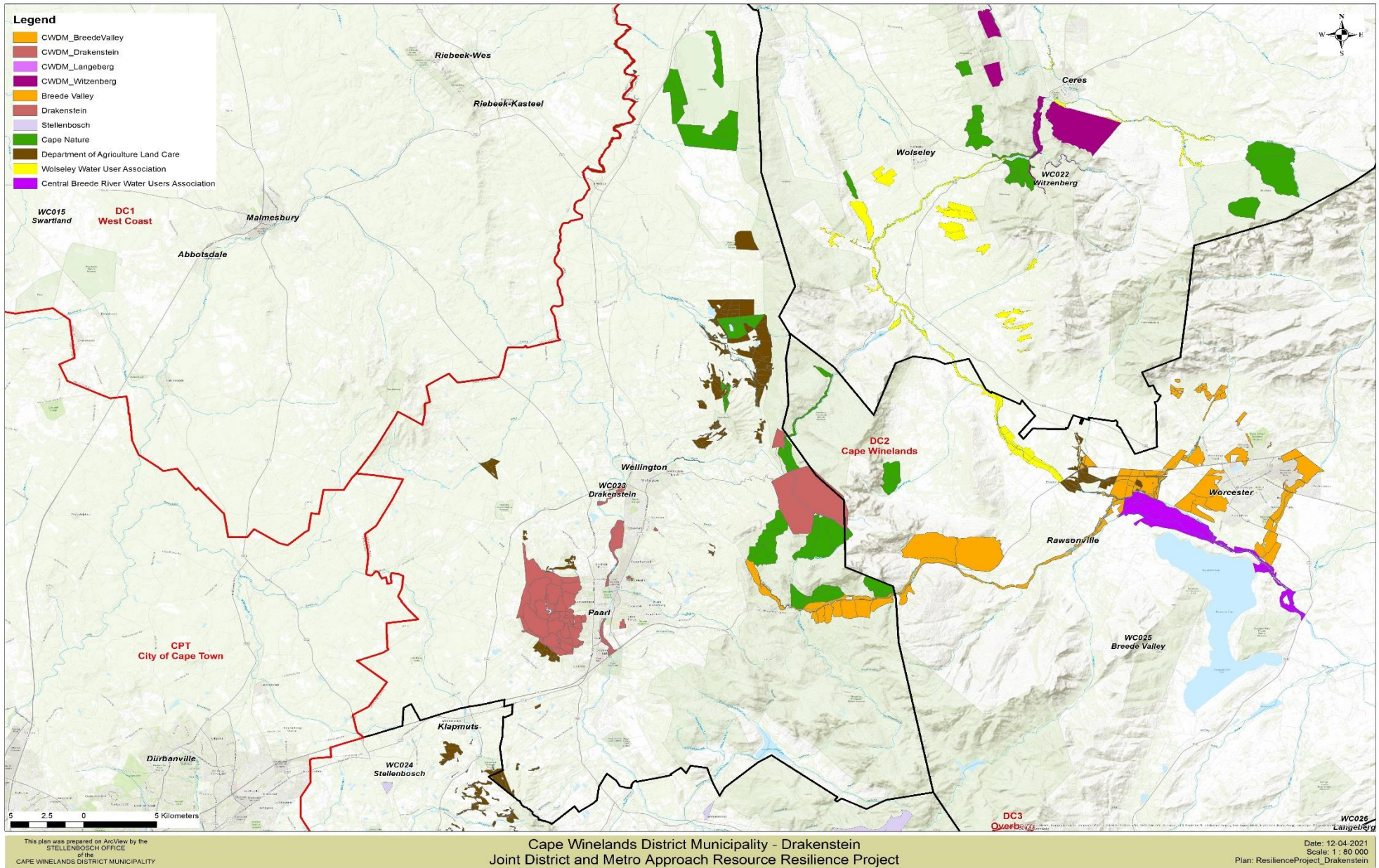
4.1 Map 4: Combined priorities



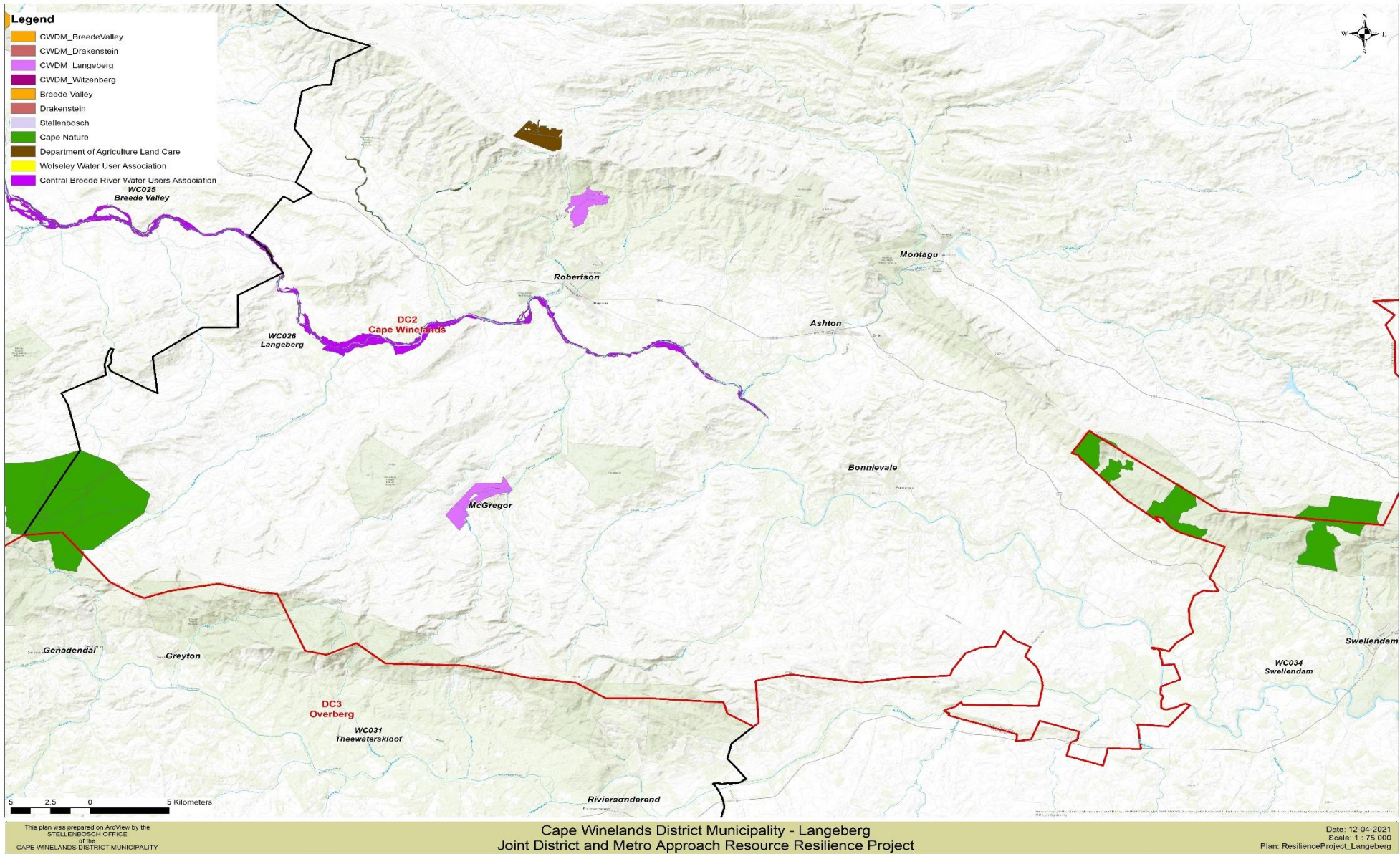
4.2 Map 5: Breede Valley Municipal area priorities



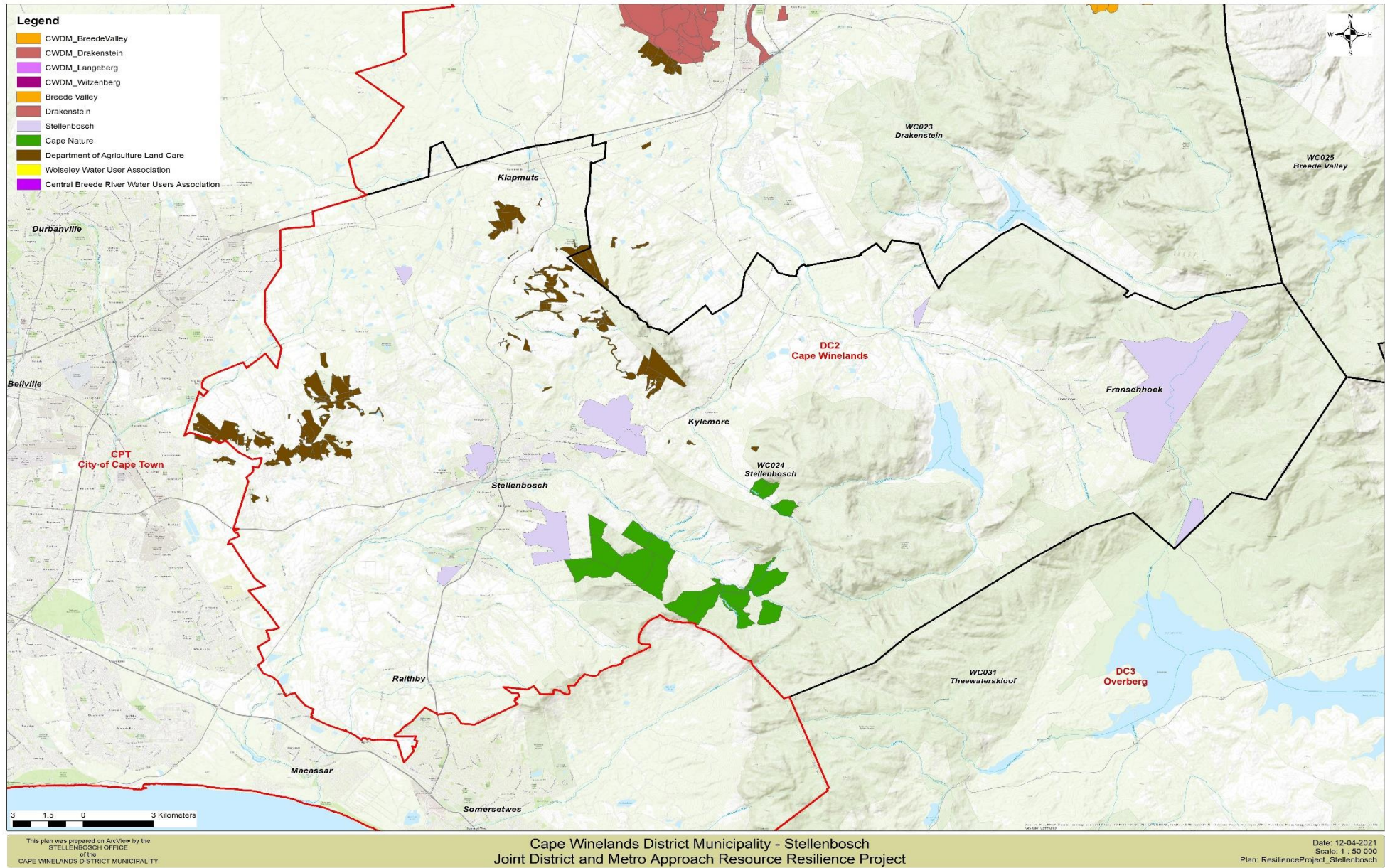
4.3 Map 6: Drakenstein Municipal area priorities



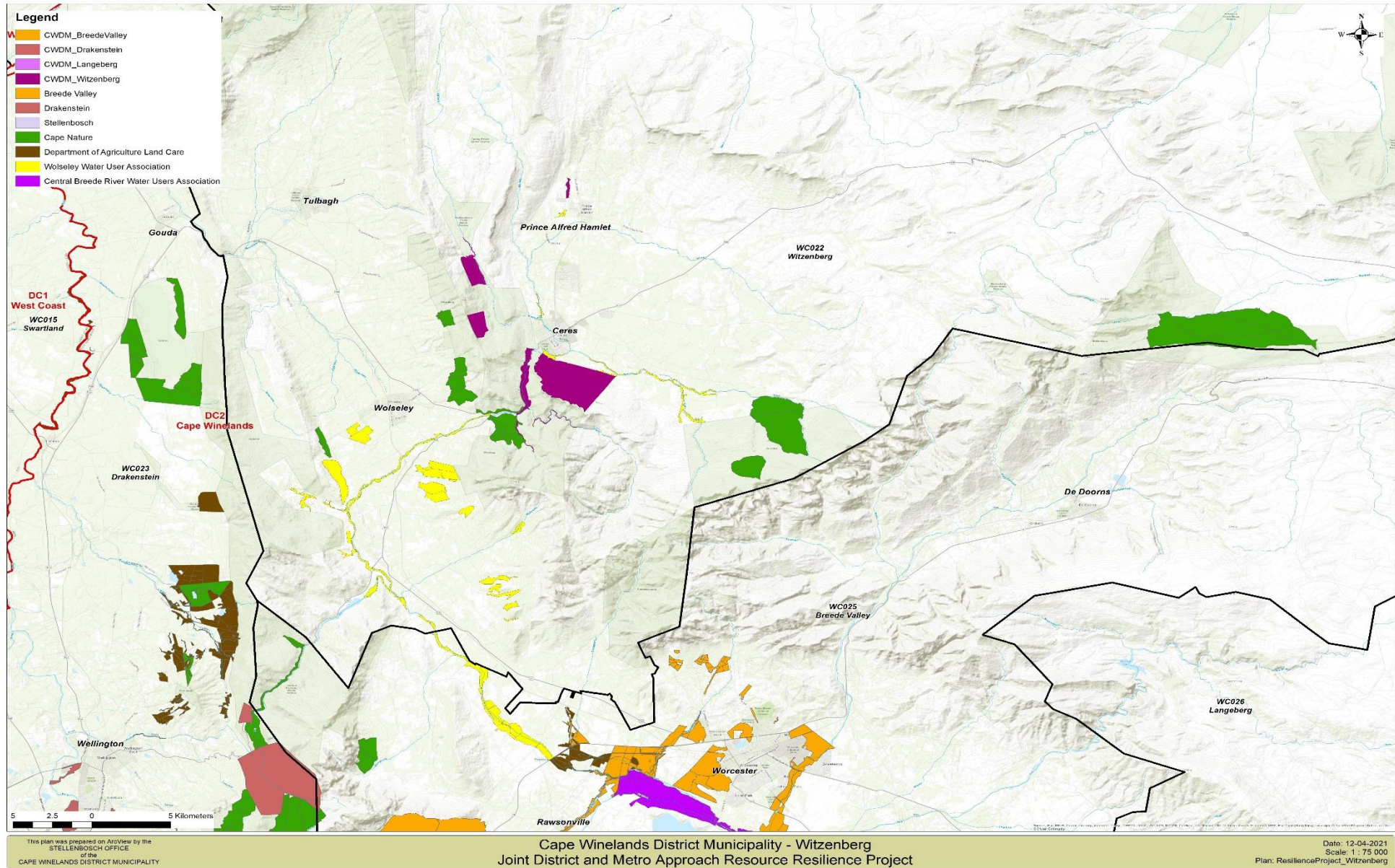
4.4 Map 7: Langeberg Municipal area priorities



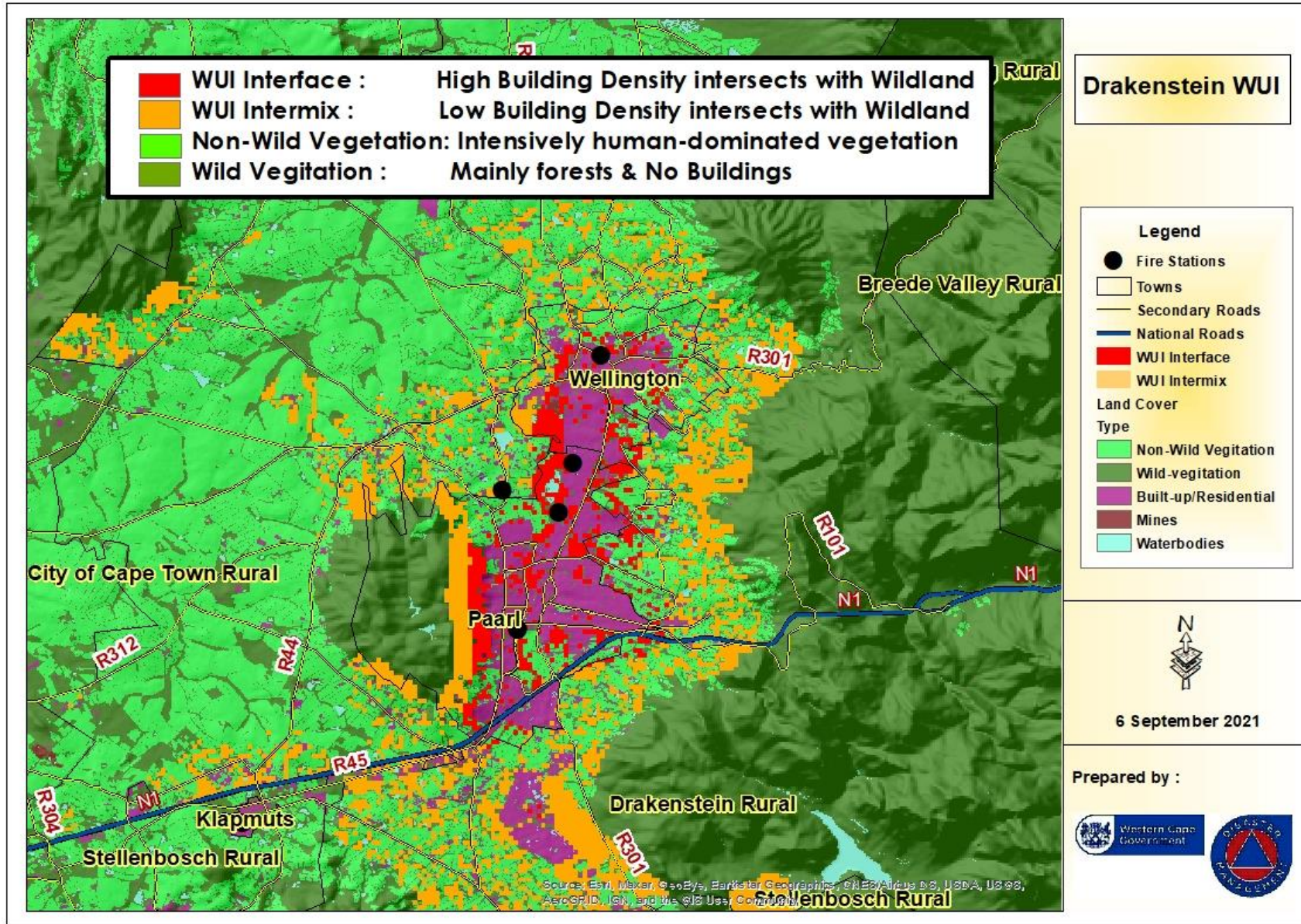
4.5 Map 8: Stellenbosch Municipal area priorities



4.6 Map 9: Witzenberg Municipal area priorities



4.7. Map 10: High priority fire risk areas, wildland urban interface (WUI); Drakenstein Municipality



4.8. Map 11: High priority fire risk areas wildland urban interface (WUI); Stellenbosch Municipality

